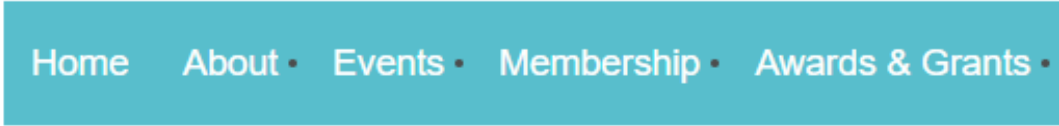


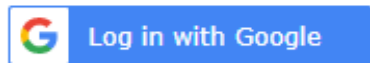
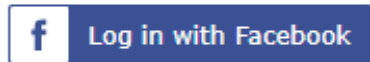


LOG INTO THE IEA SITE: www.International-Encaustic-Artists.org. You will be directed to the screen below.



Please login to continue

Please login to continue to the page you have requested.



Email
Your email address

Password
Your password

Remember me



[Forgot password](#)

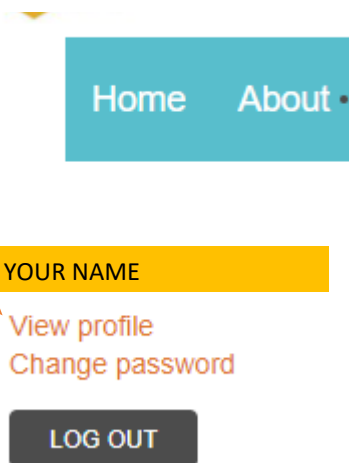
After you log in, you will automatically connect to the HOME page.

(Note: If you normally stay signed in, then you may be directed to the home page automatically.)

Click on **LOGIN** - far right side of the top menu bar



Click on **VIEW PROFILE** (below your name)



Please check that your contact information is correct.

We have very active social media accounts, and want to share your work. Please list your Facebook, Instagram and Pinterest handles, if you have them.

My profile

EDIT PROFILE

My directory profile

EDIT PROFILE - if you want to edit your profile info

MY DIRECTORY PROFILE - what is currently shown on the website

[Profile](#) [Privacy](#) [Email subscriptions](#) [Member photo albums](#) [My event registrations](#) [Invoices and payments](#) [Donations](#)

Membership details

Membership level **Your membership level**

Subscription period: 1 year
No automatically recurring payments



Membership status **Active**

Member since [redacted]

Renewal due on [redacted]

Renew to (your renewal date) [redacted]

NOTE: If you prefer, you can now set up automatic recurring payments for your dues when you make your renewal payment. Your choice is shown in this section (see blue arrow above).

[Profile](#) [Privacy](#) [Email subscriptions](#) [Member photo albums](#) [My event registrations](#) [Invoices and payments](#) [Donations](#)



TO UPDATE YOUR IMAGES: Click on **“MEMBER PHOTO ALBUMS”** in the menu.

You can have multiple albums (as shown in the example below) or only a single album. If **you want to add or delete images from an album, click on the album name.** you want to add a new album, click **ADD ALBUM**.

ADD ALBUM Albums: 6



Cartographic (4)



Cosmos (11)



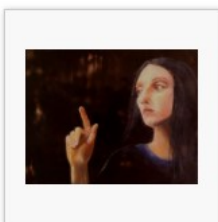
Eclectic (8)



Geometric (5)



Natural Form (6)



Portraits (7)

When you click on an album, you are taken to the images in that album, and can UPLOAD PHOTOS, EDIT the text details or DELETE the album.

My profile
[Back to profile](#)

UPLOAD PHOTOS **EDIT DETAILS** **DELETE ALBUM**

Upload photos

No file chosen

No file chosen

No file chosen

No file chosen

No file chosen

i Each photo may be up to **100MB** in size.
Supported file formats: **.jpg, .gif, .png and .tif**

Edit album details

Title

Description

You can add and/or edit details for each image (“Add Caption” below image); you can set it as the cover image for that album, or you can delete it.

You cannot rearrange the order of the images.

To navigate back to the album, click on “All Album Photos”.

To navigate back to all Albums, click on “Back to Profile” (top left corner)

My profile

[<< All album photos](#)

Portraits (7/7)

[< Previous](#) [Next >](#)



[Add caption](#)